

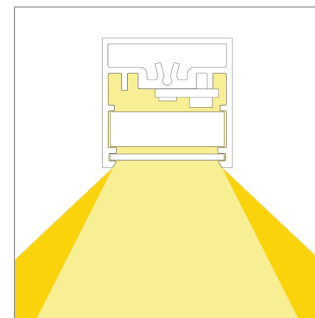
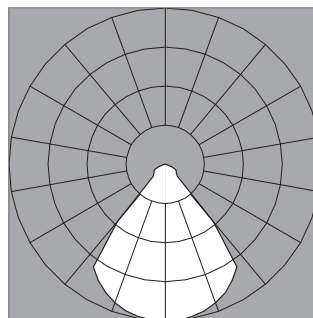
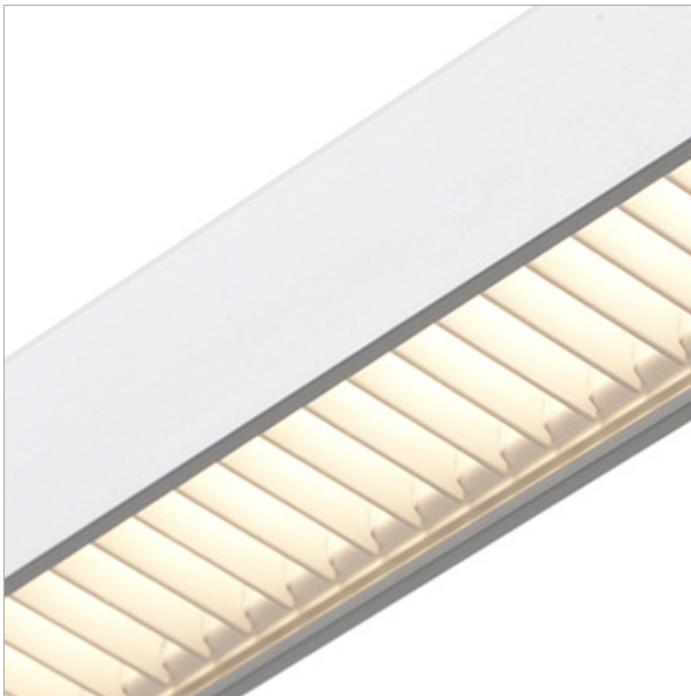
IES Report
BoxRail® | 107 | White Baffle | 80 CRI | LO

107-BX-XX-4-48-XX-XX-XX-X-X-Z-LO-35-WB-X-XX-X

	2700K	3000K	3500K	4000K
Efficacy - Lumens per Watt	52	54	54	55
Total Lumens, 4' rail length (1219mm)	763	803	803	819
Lumens per foot (305mm)	191	201	201	205
Input Power (W), 4' rail length (1219mm)	15.0	15.0	15.0	15.0
Watts per foot (305mm)	3.8	3.8	3.8	3.8
CRI	85	85	85	85

Due to the large number of options in Vode's product offering, most Vode IES reports are factored reports prepared from source reports. Source reports are the IES test reports prepared for Vode by an NVLAP accredited photometric test laboratory. Factored reports are based on data from the Vode source reports.

If the data above is in black, it is directly from a Vode source report. If it is in grey, it is factored from Vode source reports. Reference details on Vode source reports can be found on the [IES File Finder](#) page on [vode.com](#).



IES Report

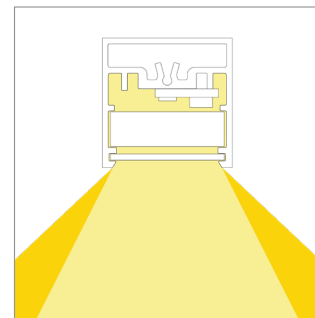
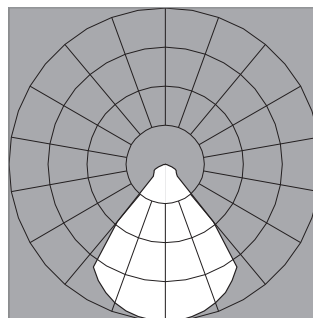
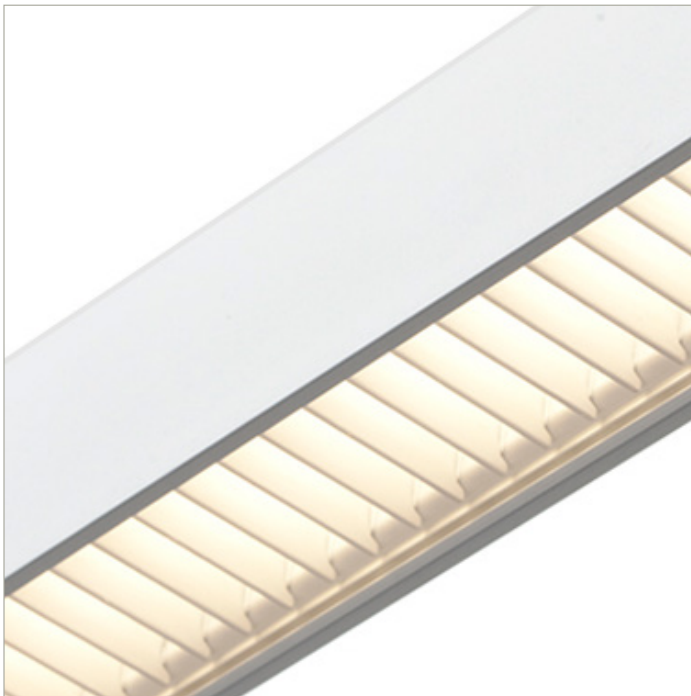
BoxRail® | 107 | White Baffle | 80 CRI | SO

107-BX-XX-4-48-XX-XX-XX-XX-X-X-Z-SO-35-WB-X-XX-X

	2700K	3000K	3500K	4000K
Efficacy - Lumens per Watt	64	66	67	67
Total Lumens, 4' rail length (1219mm)	1526	1574	1606	1606
Lumens per foot (305mm)	381	393	401	401
Input Power (W), 4' rail length (1219mm)	24.1	24.1	24.1	24.1
Watts per foot (305mm)	6.1	6.1	6.1	6.1
CRI	85	85	85	85

Due to the large number of options in Vode's product offering, most Vode IES reports are factored reports prepared from source reports. Source reports are the IES test reports prepared for Vode by an NVLAP accredited photometric test laboratory. Factored reports are based on data from the Vode source reports.

If the data above is in black, it is directly from a Vode source report. If it is in grey, it is factored from Vode source reports. Reference details on Vode source reports can be found on the [IES File Finder](#) page on [vode.com](#).



IES Report

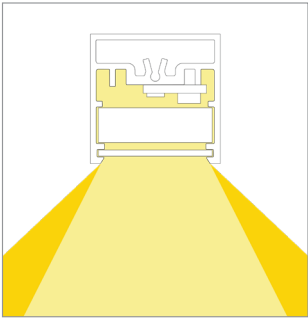
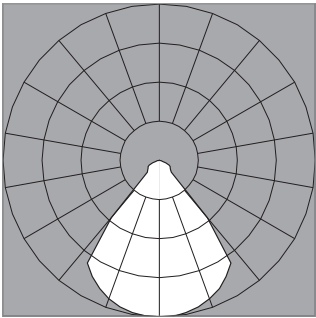
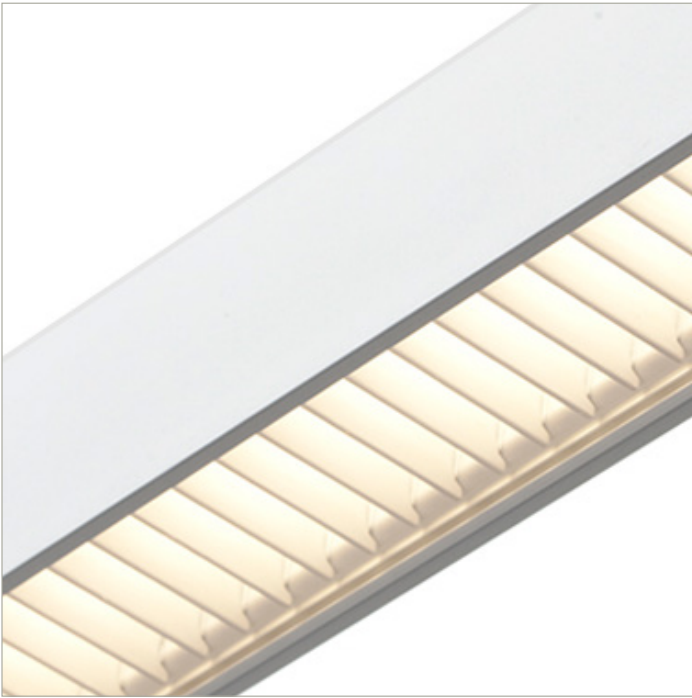
BoxRail® | 107 | White Baffle | 80 CRI | HO

107-BX-XX-4-48-XX-XX-XX-XX-X-X-Z-HO-35-WB-X-XX-X

	2700K	3000K	3500K	4000K
Efficacy - Lumens per Watt	59	61	62	64
Total Lumens, 4' rail length (1219mm)	2898	2990	3051	3112
Lumens per foot (305mm)	725	748	763	778
Input Power (W), 4' rail length (1219mm)	49.2	49.2	49.2	49.2
Watts per foot (305mm)	12.4	12.4	12.4	12.4
CRI	85	85	85	85

Due to the large number of options in Vode's product offering, most Vode IES reports are factored reports prepared from source reports. Source reports are the IES test reports prepared for Vode by an NVLAP accredited photometric test laboratory. Factored reports are based on data from the Vode source reports.

If the data above is in black, it is directly from a Vode source report. If it is in grey, it is factored from Vode source reports. Reference details on Vode source reports can be found on the [IES File Finder](#) page on [vode.com](#).



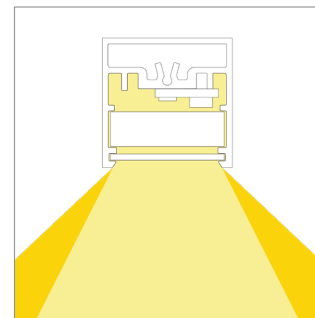
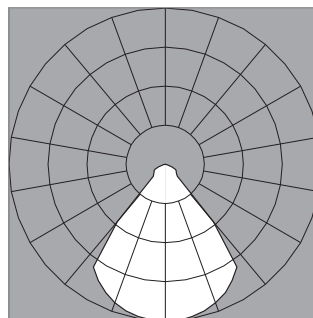
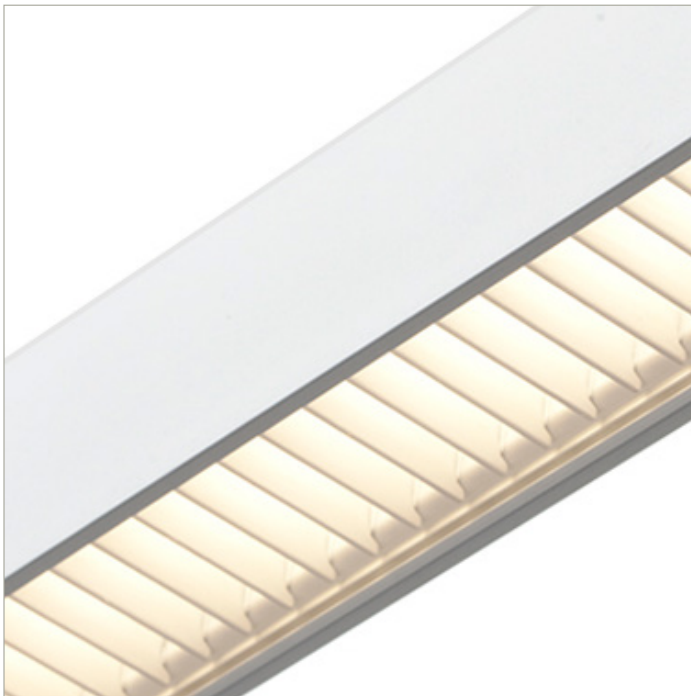
IES Report
BoxRail® | 107 | White Baffle | 90 CRI | LO

107-BX-XX-4-48-XX-XX-XX-XX-X-X-Z-LO-359-WB-X-XX-X

	2700K	3000K	3500K	4000K
Efficacy - Lumens per Watt	44	47	47	48
Total Lumens, 4' rail length (1219mm)	658	692	692	706
Lumens per foot (305mm)	164	173	173	177
Input Power (W), 4' rail length (1219mm)	15.0	15.0	15.0	15.0
Watts per foot (305mm)	3.8	3.8	3.8	3.8
CRI	96	96	96	96

Due to the large number of options in Vode's product offering, most Vode IES reports are factored reports prepared from source reports. Source reports are the IES test reports prepared for Vode by an NVLAP accredited photometric test laboratory. Factored reports are based on data from the Vode source reports.

If the data above is in black, it is directly from a Vode source report. If it is in grey, it is factored from Vode source reports. Reference details on Vode source reports can be found on the [IES File Finder](#) page on [vode.com](#).



IES Report

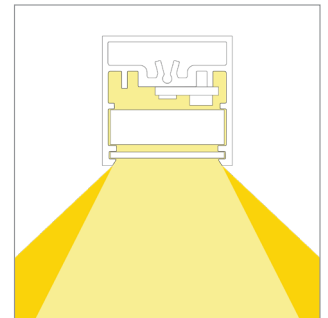
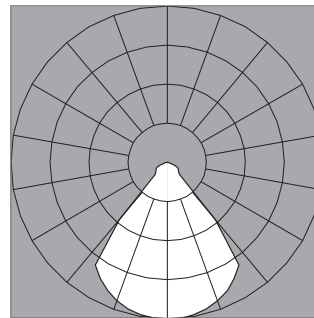
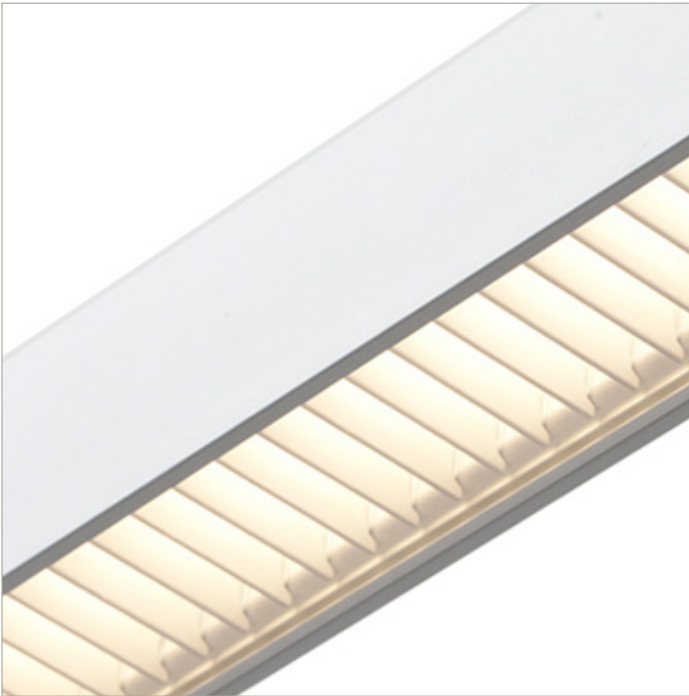
BoxRail® | 107 | White Baffle | 90 CRI | SO

107-BX-XX-4-48-XX-XX-XX-X-X-Z-SO-359-WB-X-XX-X

	2700K	3000K	3500K	4000K
Efficacy - Lumens per Watt	55	57	58	59
Total Lumens, 4' rail length (1219mm)	1315	1357	1384	1412
Lumens per foot (305mm)	329	339	346	353
Input Power (W), 4' rail length (1219mm)	24.1	24.1	24.1	24.1
Watts per foot (305mm)	6.1	6.1	6.1	6.1
CRI	96	96	96	96

Due to the large number of options in Vode's product offering, most Vode IES reports are factored reports prepared from source reports. Source reports are the IES test reports prepared for Vode by an NVLAP accredited photometric test laboratory. Factored reports are based on data from the Vode source reports.

If the data above is in black, it is directly from a Vode source report. If it is in grey, it is factored from Vode source reports. Reference details on Vode source reports can be found on the [IES File Finder](#) page on [vode.com](#).



IES Report

BoxRail® | 107 | White Baffle | 90 CRI | HO

107-BX-XX-4-48-XX-XX-XX-XX-X-X-Z-HO-359-WB-X-XX-X

	2700K	3000K	3500K	4000K
Efficacy - Lumens per Watt	51	53	54	55
Total Lumens, 4' rail length (1219mm)	2499	2578	2630	2683
Lumens per foot (305mm)	625	644	658	671
Input Power (W), 4' rail length (1219mm)	49.2	49.2	49.2	49.2
Watts per foot (305mm)	12.4	12.4	12.4	12.4
CRI	96	96	96	96

Due to the large number of options in Vode's product offering, most Vode IES reports are factored reports prepared from source reports. Source reports are the IES test reports prepared for Vode by an NVLAP accredited photometric test laboratory. Factored reports are based on data from the Vode source reports.

If the data above is in black, it is directly from a Vode source report. If it is in grey, it is factored from Vode source reports. Reference details on Vode source reports can be found on the [IES File Finder](#) page on [vode.com](#).